

Location

Walton High School is easily accessible, located off the A513 in Stafford and with easy road and public transport links to Stafford Town Centre, Rugeley, Lichfield and Cannock.



Designed and produced by MB Design & Marketing Ltd, Tel: 01673 842911, Email: melaine@mbdesignhouse.co.uk

Your opportunity to **achieve**



Walton High School, Sixth Form
The Rise, Walton on the Hill, Stafford, ST17 0LJ

Telephone: 01785 356300
Email: office@walton.staffs.sch.uk
Web: www.waltonstaffs.com

Headteacher: Mr N Finlay BA Hons
Chair of Governors: Mr B Rowell
Director of 6th Form: Mr A Silverwood BA Hons



Walton High School Sixth Form



Introduction by The Headteacher

You are about to enter perhaps the most crucial and exciting phase of your educational experience. Sixth Form study is challenging but also enjoyable and extremely rewarding and I am absolutely delighted that, if you choose to study at Walton, you will benefit from our outstanding new Sixth Form facilities.



We are justifiably proud of what we have developed and we hope that you will benefit from everything that the new Sixth Form Centre has to offer.

We have an extensive curriculum offer with a very wide range of subjects and subject combinations available and our results over the last number of years have been excellent with over half of all grades coming out at A*, A or B. It was for these reasons that our Sixth Form was rated as outstanding at the time of our most recent Ofsted inspection.

If you are a student who does not currently attend Walton High School, I want to reassure you that you will be made to feel most welcome. Every year we take in a large number of students from other schools and we do everything we can to integrate them into our successful Sixth Form.

Whatever you decide to study, I look forward to working with you throughout your Sixth Form career at Walton High School.

A handwritten signature in black ink, appearing to read 'N Finlay'.

Mr N Finlay BA Hons,
Headteacher

“Our Sixth Form Centre is very well equipped and the staff are friendly, approachable and insightful.”

Student.





Academic Achievement and Curriculum Choice

The highest quality of teaching, an excellent track record of results and the guidance and support to ensure any student makes the most of their true academic potential are the key considerations and are all the reasons for studying here at Walton.

Becoming an ever more independent learner is crucial but the grades students earn as a result of the efforts put in to their learning and progress are what give each person here the best future choices and the rewards for enthusiasm and ability. With year on year increasing successes for our students in maximising their achievement, we know we can give our students the quality teaching and support they deserve.

As a Sixth Form team, we pride ourselves on our ability to work with you to design a programme of study which is tailored to your individual strengths.

Our entry requirements to join the Sixth Form here at Walton are 5 Grade 5's or above at GCSE in at least five different subjects, including English Language and Mathematics. For our vocational pathway the entry requirements are Grade 4's or higher, students can however study a combination of both vocational and academic subjects.

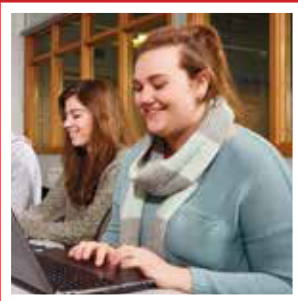
Many individual subjects have further specific entry requirements; please refer to our Course Guide for more information.

Typically students would study 3 academic A Levels plus have the vital opportunity to add to this with additional courses such as our Enrichment programme, further qualifications including the AQA Baccalaureate and the popular Extended Project.

A few students may be advised to follow a 4th A Level and we will discuss all these choices and your needs at the application and interview stages.

“Walton Sixth Form is unbeatable because of the wide range of subjects to choose from and staff you can talk to.”

Student.



Post 18 Destinations and Support and Guidance

We are extremely proud of our students' achievements over the years. Walton High School has a very high level of success in helping our students gain offers from universities and, importantly, securing those places when they have received their results.

We seek to ensure that our students achieve their goals whether pursuing a top university place, seeking an apprenticeship, joining the Armed Forces or taking a gap year.

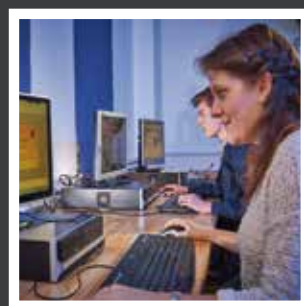
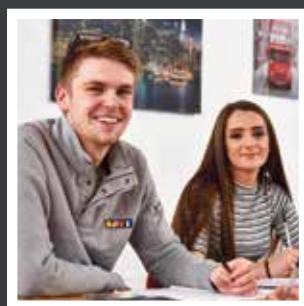
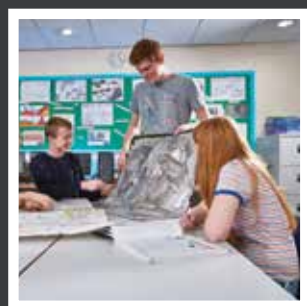
We pride ourselves greatly in the level of individual support we at Walton are able to offer all of our sixth form students. A dedicated team manage the Sixth Form with a Director of Sixth Form, two Heads of Sixth Form across the year groups and a Sixth Form Administrator. These people oversee all aspects of curriculum and pastoral provision and their role is to get the very best achievement and learning experience for those who study with us.

A very skilled team of tutors build a close relationship with students over time to be able to advise, monitor and encourage in the shared goal in making the very most out of time spent studying here.

Careers and specialist counselling advice are made available and sophisticated tracking and data reports are utilised to help ensure progress is made.

“The teaching staff here will do their very best to ensure you achieve your goals. The Sixth Form is serious where it counts but friendly when it matters.”

Student.





Facilities for Learning and Bursary

With our dedicated Sixth Form building, our students can enjoy first class opportunities for personal, independent study as well as socialising and grabbing a coffee and food.

The independently run cafe has an excellent range and adds to the welcoming atmosphere. The centre also houses the offices of the Sixth Form Management Team so access between staff and students is made effective.

The most crucial role of the building is in the space it provides for students to do their work outside of timetabled lessons. With free wifi, dedicated computer and quiet rooms and a large open area, there is excellent provision to allow students to make the most of their time.

Throughout the rest of the school there is access to computers, a library, exams office and tutor rooms. In addition music and sport facilities are ever popular.

Students requiring financial assistance during their time in Sixth Form can apply to the 16-19 Bursary Fund.

The Sixth Form Office can provide more detailed information regarding eligibility and how to apply once students start the academic year. The relevant forms for this scheme can be found in the Sixth Form section of the school website

“Being here is so refreshingly different from being in the lower school, you’re treated like a student rather than a pupil.”

Student.



Opportunities at Sixth Form

We provide students with many opportunities to complement their main programme of study and to enrich their personal development.

Students are encouraged to take responsibility within school, to work alongside tutors and subject teachers offering classroom support.

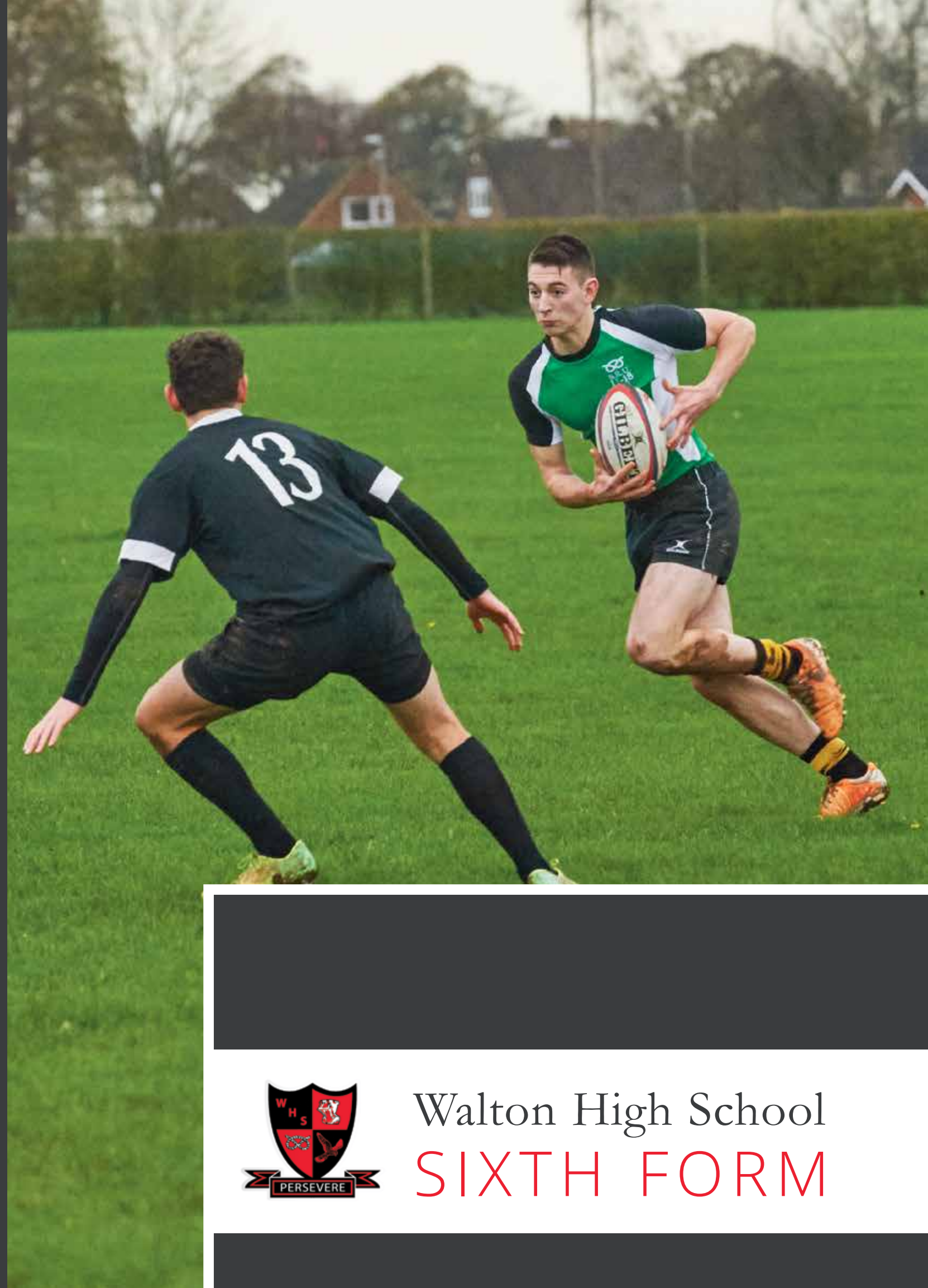
This contributes to the whole school community at Walton.

Enrichment activities are designed to allow students the opportunity to try something new or extend their experience in a certain area to prepare them for their future chosen career or university course.

These opportunities include our Young Enterprise programme, the Sports Leader qualification, a Creative Writing workshop, Work Experience in their chosen field or Voluntary/Charity work.

“The study facilities are calm and productive which is important preparation for adult independence.”

Student.



Walton High School
SIXTH FORM